

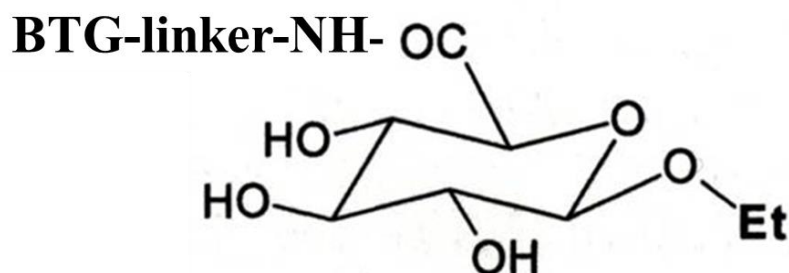
**PRODUCT DATA SHEET**

<b>Product Data Sheet:</b>	Sheep Monoclonal Antibody (SMA) to <b>ethyl glucuronide (EtG)</b>
<b>SMA Covered</b>	<b>EtG.1E6</b>
<b>Introduction and Production Description</b>	EtG is a metabolite of alcohol and is therefore a marker of alcohol consumption. Because EtG has a longer retention in blood than alcohol itself, EtG offers an extended window of testing.

**Manufacturing Specification)**

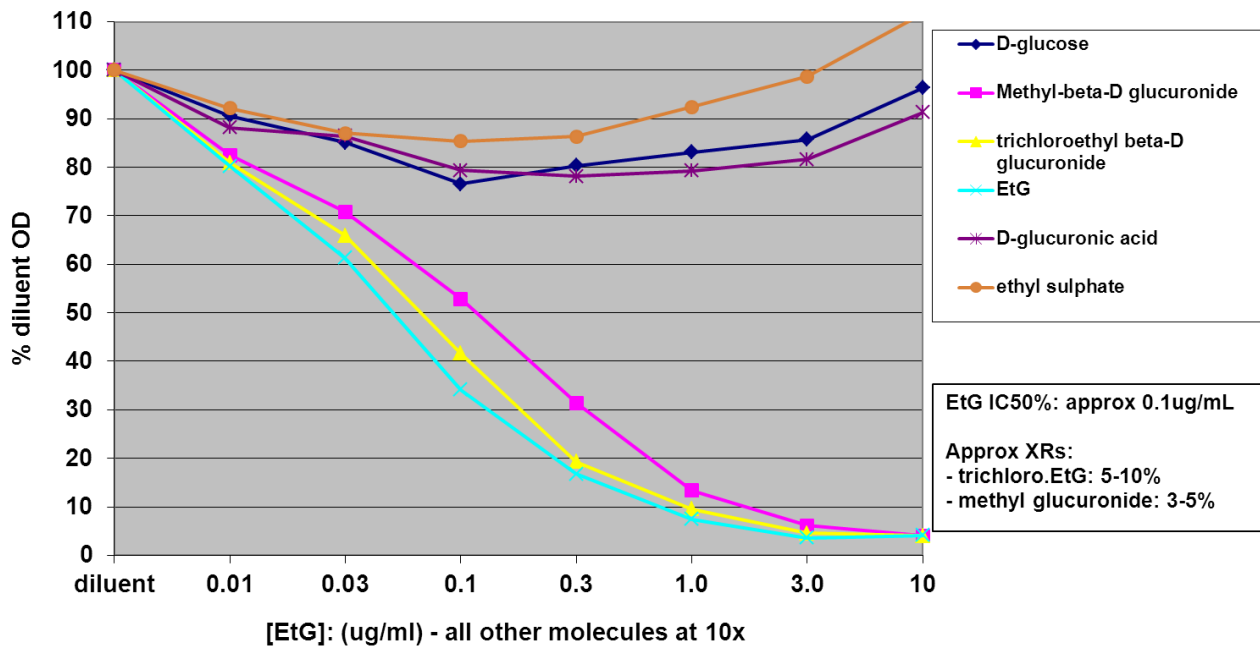
<b>Parameter</b>	<b>Specification</b>	<b>Test Method</b>
<b>Buffer and pH</b>	PBS +0.1% Sodium azide at 7.2-7.4	pH Meter
<b>Antibody Concentration</b>	1-3 mg/mL	A280 (E <sub>c</sub> = 1.4)
<b>Purity and Aggregates</b>	Single Main Peak ≥90%	Size Exclusion HPLC
<b>Immunological Activity</b>	±20% biological activity of frozen reference standard	In house ELISA

**Immunogen Structure**



## ELISA DATA: Cross-Reactivities

### EtG Fingerprint: EtG.1E6



Datasheet last revised Jan 2022