

PRODUCT DATA SHEET

Product Data Sheet:	Sheep Monoclonal Antibodies (SMAs) to biotins (bt)
SMA Covered	Dbt.1D10 & Lbt.1A7
Introduction and Production Description	The high affinity avidin-biotin system is widely used in biological science. Dbt.1D10 is a high affinity SMA that has been developed as an alternative to avidins where the superior coating properties of an antibody are preferred. Lbt.1A7, in combination with the use of mirror-image L-biotin is an alternative system that avoids the interference of endogenous D-biotin.

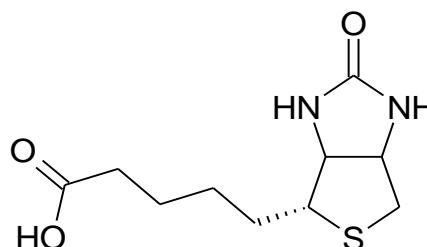
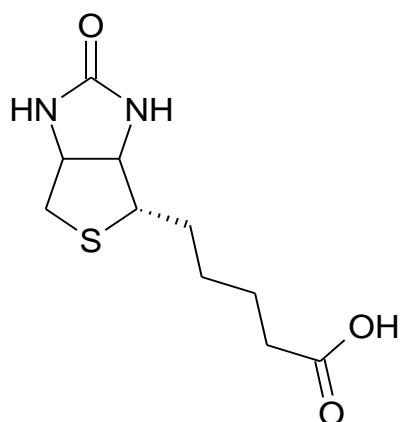
Manufacturing Specification (both SMAs)

Parameter	Specification	Test Method
Buffer and pH	PBS +0.1% Sodium azide at 7.2-7.4	pH Meter
Antibody Concentration	1-3 mg/mL	A280 (E _c = 1.4)
Purity and Aggregates	Single Main Peak ≥90%	Size Exclusion HPLC
Immunological Activity	±20% biological activity of frozen reference standard	In house ELISA

ELISA DATA: Conjugate Reactivities

Both Dbt.1D10 and Lbt.1A7 bind to amide conjugates: bt-CO-NH-lysine-X

Free Biotin Binding



Dbt.1D10 binds to the naturally occurring D-biotin - Lbt.1A7 binds mirror image L-biotin